

Portsmouth Moorings

Mooring charges & locations

AREA GUIDE

Area 25

Located right behind the Hardway Slipway. These moorings are ideal for boats up to 24ft able to take the bottom (soft mud). Access is via our own slipway or the nearby public jetty.

Areas 29 and 31

These moorings are pleasantly situated in a quiet reach of the harbour close to the training ship 'Ramehead' and sheltered from westerly winds. Suitable for boats up to 32ft, most of these moorings are afloat at all times except the very lowest spring tides. The remainder are afloat for at least eight hours out of twelve. We also have moorings in Area 31 where there is always 3ft- 4ft at Mean Low Water Springs (MLWS).

Area 46

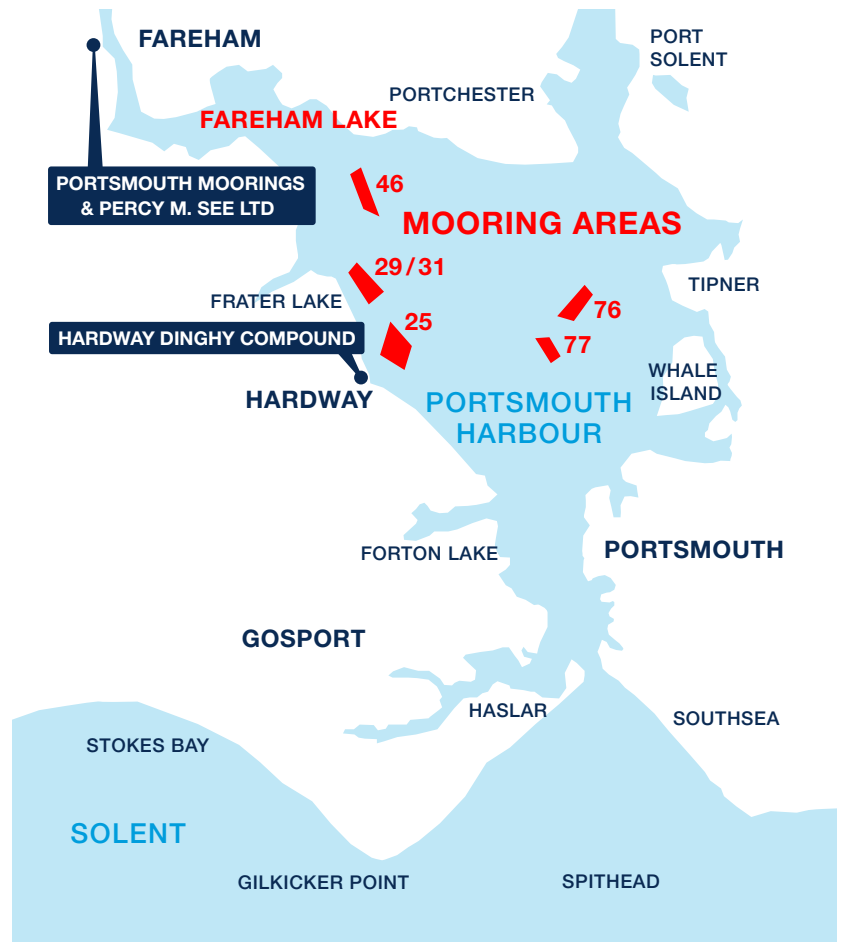
Situated in the North of the harbour.

Areas 76 and 77

Situated closer to Portsmouth harbour entrance, including some deep water moorings that have up to 4ft of water at MLWS. There are also shallow moorings suitable for large catamarans. These areas also provide great vantage points for big harbour events.

Fareham Lake

Band B, C and D moorings are available in this part of the harbour and are accessed from Fareham Slipway.



BAND GUIDE

Band A

These areas are afloat all the time and some are suitable for fin keeled boats.

Band B

These moorings are afloat nearly all the time. Only at the bottom of a big spring tide would they dry out.

Band C

These moorings are afloat all the time at neap tides and for about eight hours out of twelve on spring tides.

Band D

Afloat for about six hours out of twelve. All afloat times are approximate due to variations of wind and tide.

PRICE GUIDE

Please contact us for full prices

T. 01329 825861

info@portsmouthmoorings.co.uk

AREA 25 12 MONTHS

Band B	Price on Application
Band C	Price on Application
Band D	£375

AREA 29 / 31

Band A	Price on Application
Band B	Price on Application
Band C	Price on Application

AREA 76 / 77

Band A	Price on Application
--------	----------------------

Contact

Marine Warehouse 1 Lower Quay Rd Fareham Hampshire PO16 0RG

T. 01329 825861 info@portsmouthmoorings.co.uk www.portsmouthmoorings.co.uk